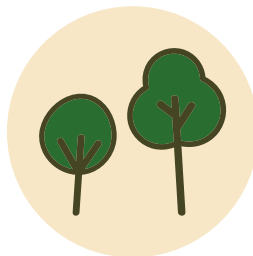


## MITIGATING FACTORS



### Avoid conifers next to the façades

Thuja, cypress, juniper and spruce are highly flammable. If ignited, they can burn intensely and significantly increase the risk of spread to adjacent buildings. Therefore, avoid planting conifers close to the house and prune the lower branches of existing trees.



### Include deciduous trees around your garden

Fires in coniferous areas burn with lower intensity in the presence of a few deciduous trees. In addition, deciduous trees help protect against embers, as their large crowns do not burn.

# FIRE PRIME

European Programme for  
Wildfire-Prepared Communities

## HOW TO PROTECT YOUR HOME AGAINST WILDFIRES

Adapted for  
northern Europe



Co-funded by  
the European Union

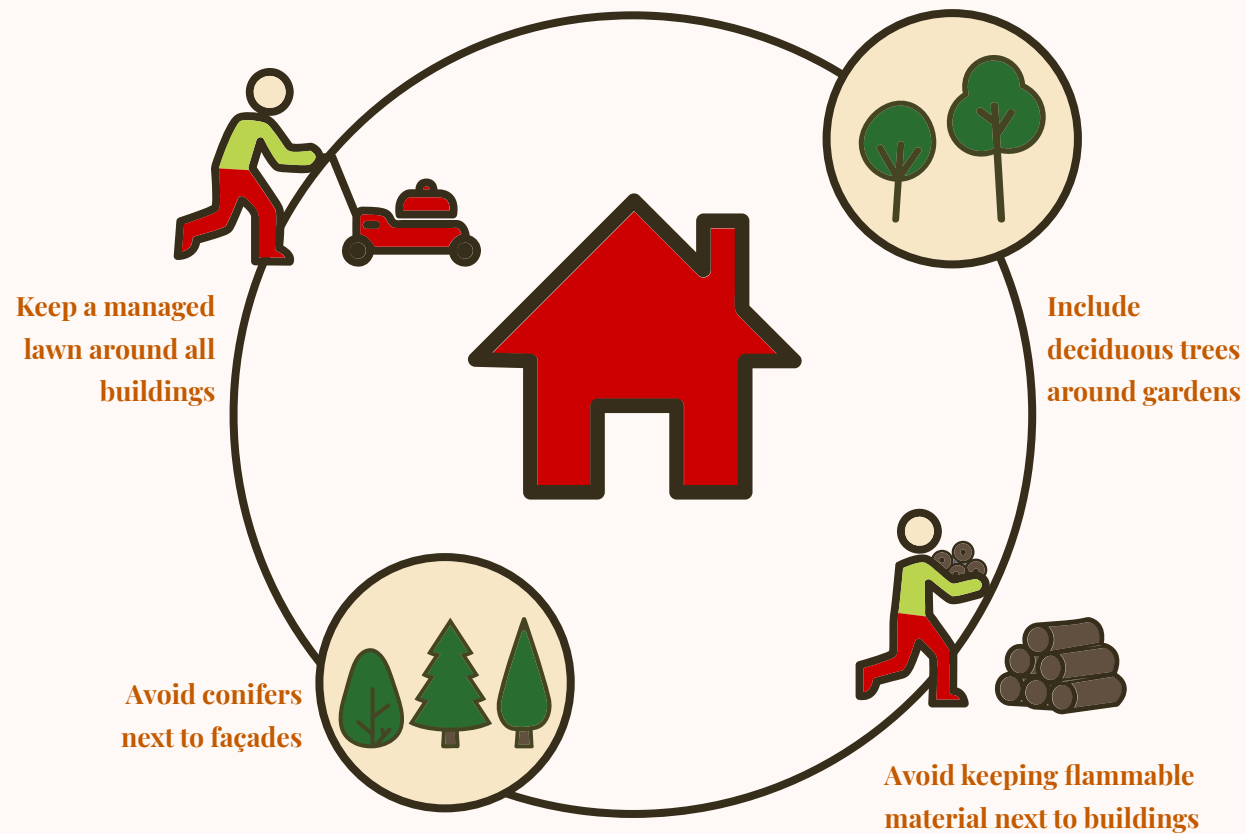
FIREPRIME is co-funded by the European Union Civil Protection (Project GA101140381, FIREPRIME UCPM-2023-KAPP). Views and opinions expressed in this document are however, those of the author(s) only and do not necessarily reflect those of the European Union or the European Commission. Neither the European Union nor the granting authority can be held responsible for them.

RI  
SE

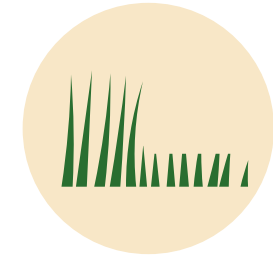
Research  
Institutes  
of Sweden

## BACKGROUND

Every year, many northern European buildings are ignited by wildfires. Not only large and intensive fires ignite buildings; on the contrary, most of these fire are small. They mainly occur during spring when land- and homeowners burn garden residues or lasts season's grass litter.

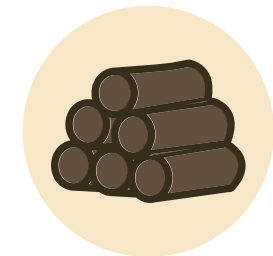


## MITIGATING FACTORS



### **Cut the grass around all buildings**

Most north European buildings are ignited through last year's dry grass conveying flames towards the façade. By keeping the grass short around all buildings, especially during spring before green-up, you reduce the risk of ignition.



### **Avoid keeping flammable material next to buildings**

During wildfires, firewood, waste bins or garden furniture placed close to the building can ignite, exposing the façade to intense and prolonged heat. This increases the risk of building ignition. Therefore, store firewood and other combustible materials at a safe distance from the house.